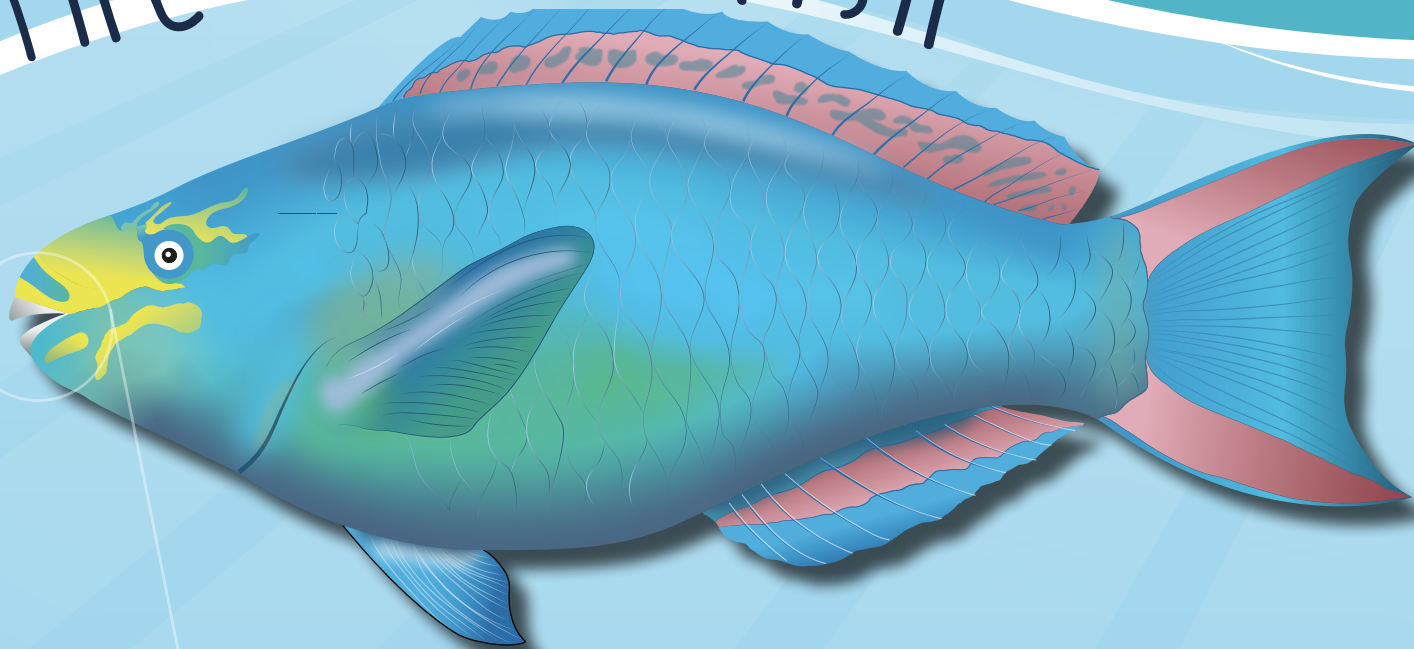


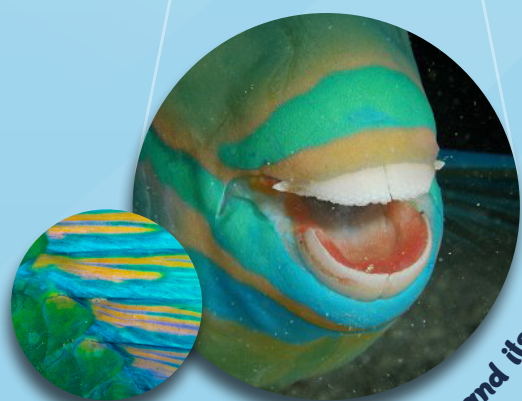
# THE PARROTFISH



## CORAL REEFS MAINTENANCE

The **parrotfish** feeds mostly on **algae** that grow on rocky surfaces and corals. Through its diet, the parrotfish:

- ➔ **limits the proliferation of algae** that are detrimental to the proper development of corals;
- ➔ **creates space for coral larvae**, in addition to other fixed organisms (sponges, worms...), which will be able to **establish** themselves, **develop** and **enrich the reef**.



This fish owes its name to its beak and its shimmering colors like those of a parrot!

## MITIGATION OF EROSION

While grazing on the algae, the parrotfish **crunches part of the coral or rock**. After digestion, this ingested material is **evacuated in the feces**, in the form of very fine sediments: it is the **white sand** that constitutes the beautiful beaches of our islands!

The parrotfish is **the main producer of sand in coral reefs**: in the **Caribbean**, some species can produce **several kilos of sand per year**!

Parrotfish grazing algae on coral

